



ELATION Model number: 36TRU14663AH18

3 beds • 2 baths • 924 sq.ft. • 14' width • 66' depth

Our home building facilities invest in continuous product and process improvements. Plans, dimensions, features, materials, specifications and availability are subject to change without notice or obligation. Renderings and floor plans are representative likenesses of our homes and may differ from the actual homes. We invite you to tour a Home Center near you and inspect the highest value in quality housing available or call (910) 424-8600 to speak with a Home Consultant. Copyright 2017, CMH. All rights reserved.

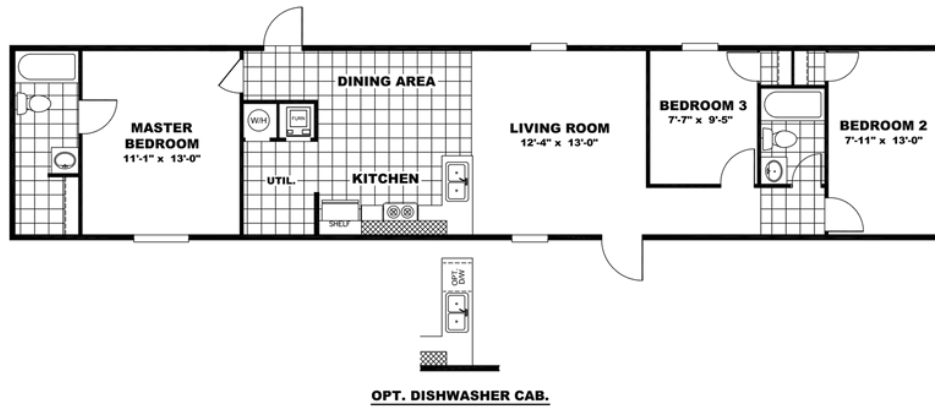
<https://www.claytonfay.com>

**CLAYTON HOMES-
FAYETTEVILLE**

**3340 GILLESPIE STREET
FAYETTEVILLE, NC 28306**

Monday - Thursday: 9am - 7pm
Friday: 9am - 6pm
Saturday: 9am - 5pm
Sunday: Closed

(910) 424-8600



ELATION Model number: 36TRU14663AH18

3 beds • 2 baths • 924 sq.ft. • 14' width • 66' depth

Our home building facilities invest in continuous product and process improvements. Plans, dimensions, features, materials, specifications and availability are subject to change without notice or obligation. Renderings and floor plans are representative likenesses of our homes and may differ from the actual homes. We invite you to tour a Home Center near you and inspect the highest value in quality housing available or call (910) 424-8600 to speak with a Home Consultant. Copyright 2017, CMH. All rights reserved.

<https://www.claytonfay.com>

CLAYTON HOMES- FAYETTEVILLE

3340 GILLESPIE STREET
FAYETTEVILLE, NC 28306

Monday - Thursday: 9am - 7pm
Friday: 9am - 6pm
Saturday: 9am - 5pm
Sunday: Closed

(910) 424-8600